



# COSPLAY GUIDE



Drone Grenadier





## Drone Grenadier



A

The denizens of the Swarm have bright orange sclera with no visible pupil.

B

The Grenadier has a chalky white war paint that covers its chest to shoulder.

C

The leather loin cloth has metallic spikes and plates woven into the fabric.

D

The IFF lights for the Grenadier are built into the leather pouch accessories and front codpiece.

E

The leather fabric of the loin cloth has a scavenged look with rough, imperfect edges.

F

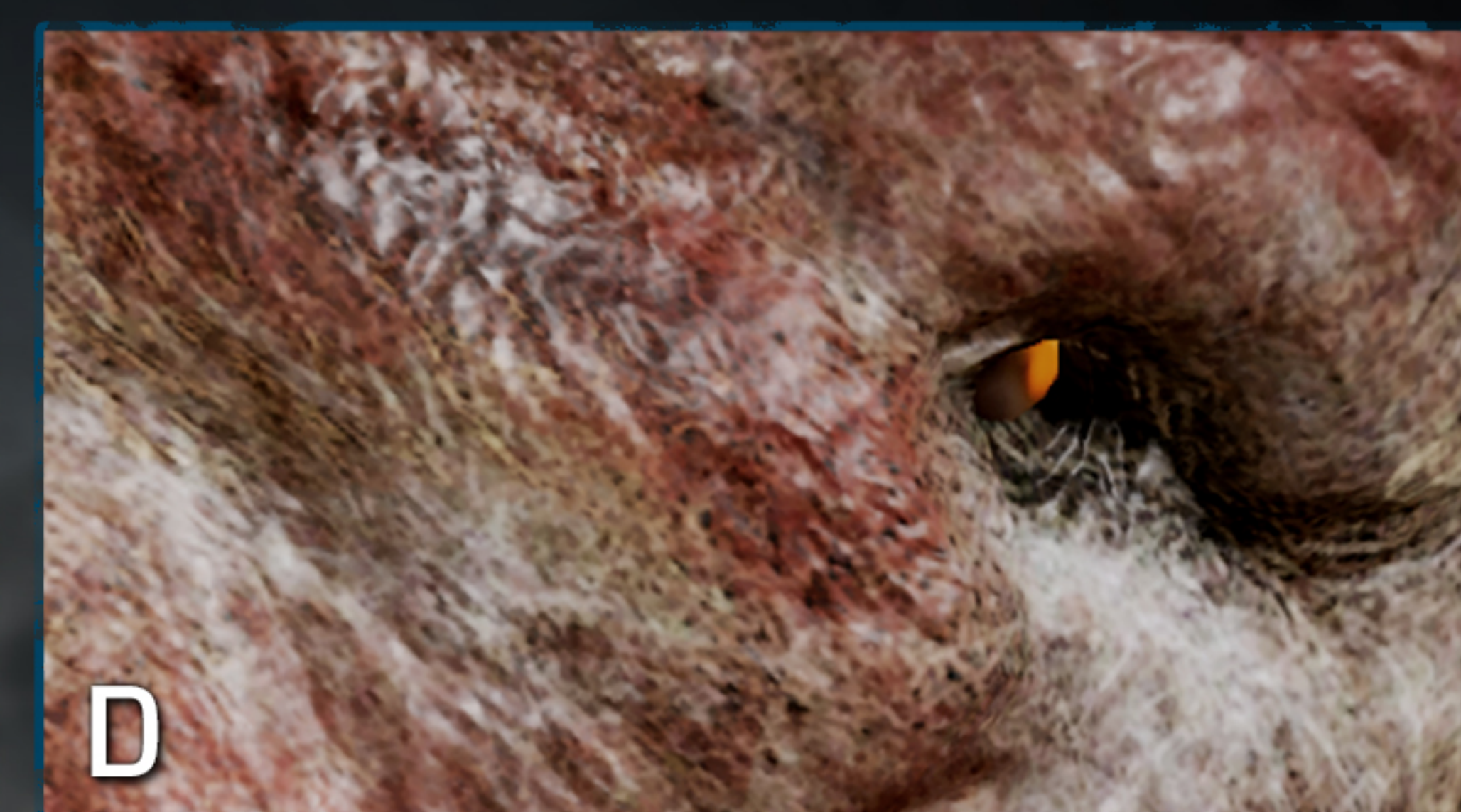
The dirt and grime covering the Grenadier's boots is key to selling the uncivilized nature of the Swarm.







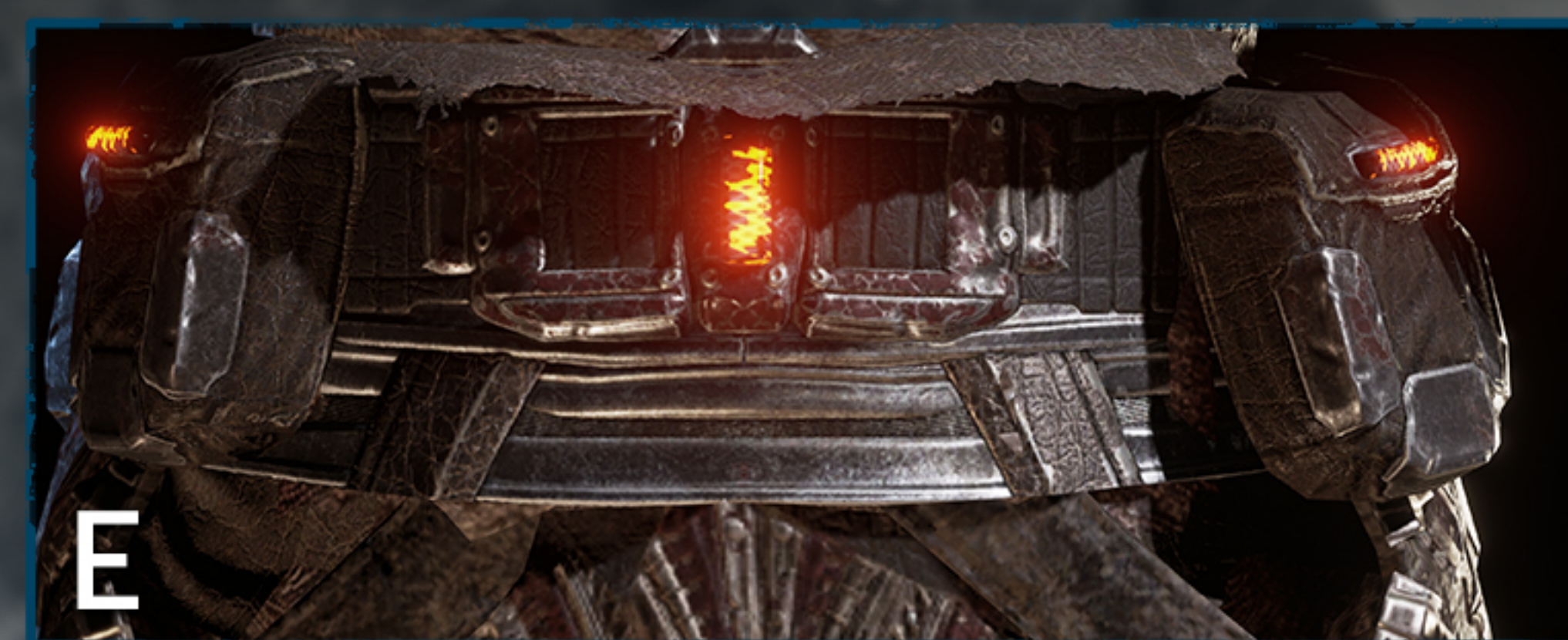
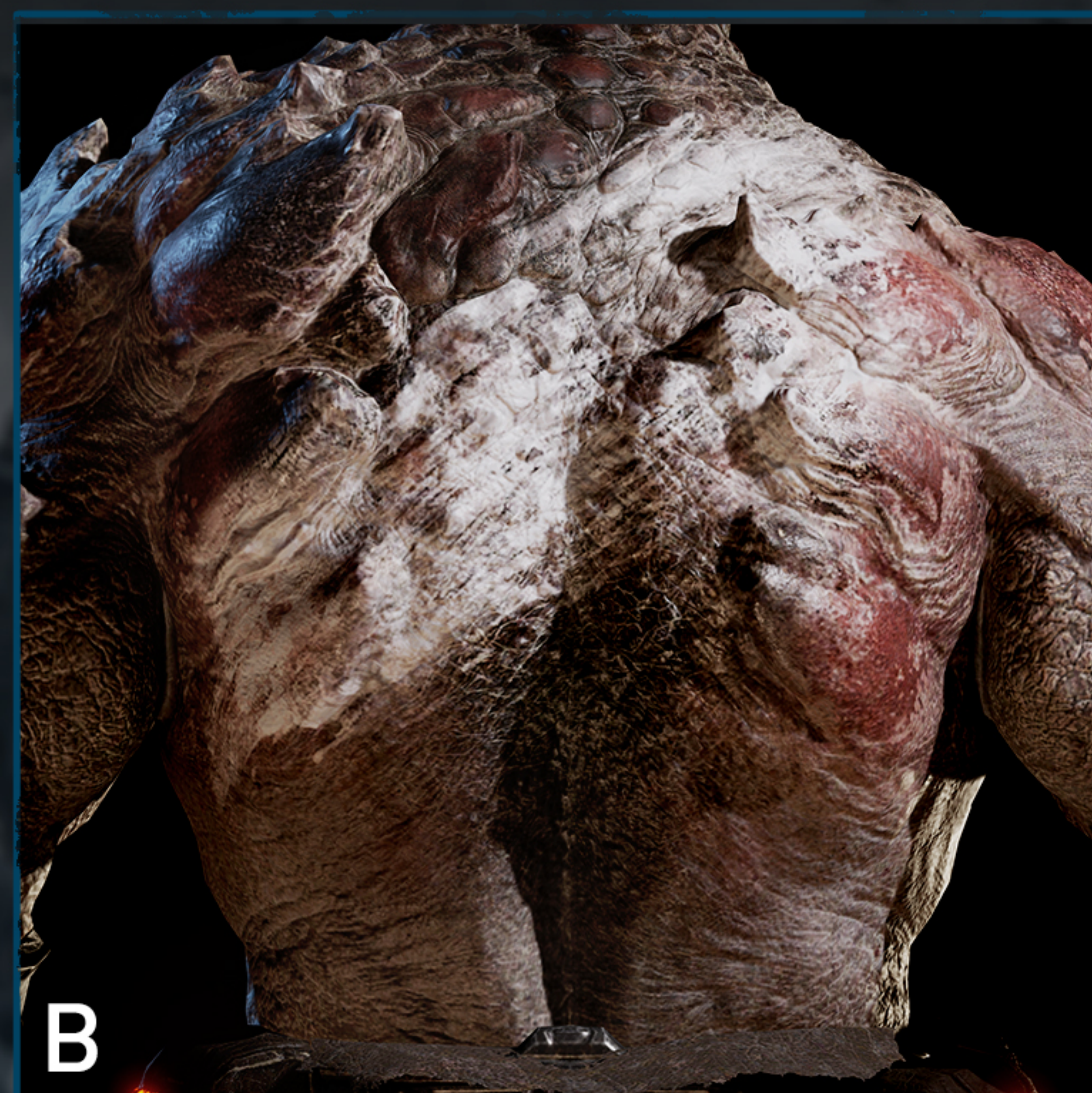




The Grenadier is a formidable opponent on the battlefield. All Swarm have two sets of nostrils (A, E) that are a key part of their physiology, along with their eyes that harbor bright orange sclera with no visible pupil. The crab-like red carapace, that covers much of their head and body, grows out of their elephant-like skin. Make sure to mimic the bumpy imperfections of these growths to reflect the organic nature of the carapace.







**A** The chalky white war paint covers the chest all the way to the left shoulder. Nail the look by scraping it across the chest as if you were applying it to your own torso without looking.

**B** The red carapace has a slight translucency in the light, melding into the elephant-like skin on its back.

**C** Most of the armor worn by the Grenadier is leather in nature, save for a metallic front cod-piece that stores two imperfect triangle IFF lights.

**D** The spikier peaked formation of the carapace on the left shoulder is asymmetrical to the right, due to its organic nature.

**E** The rear center of the belt holds an old imperfect IFF light, broken in places, along with additional embedded IFF lights on the leather pouches.

**F** These boots are specific to the Grenadier, with a layered look covered in dirt and muck from the Wilds.

**G** Red plates, with a strip of slightly larger leather behind, are bolted onto these bulky gauntlets.

**H** The rear of the gauntlet is ridged to be perpendicular to the gaps in metal plates on the other side.

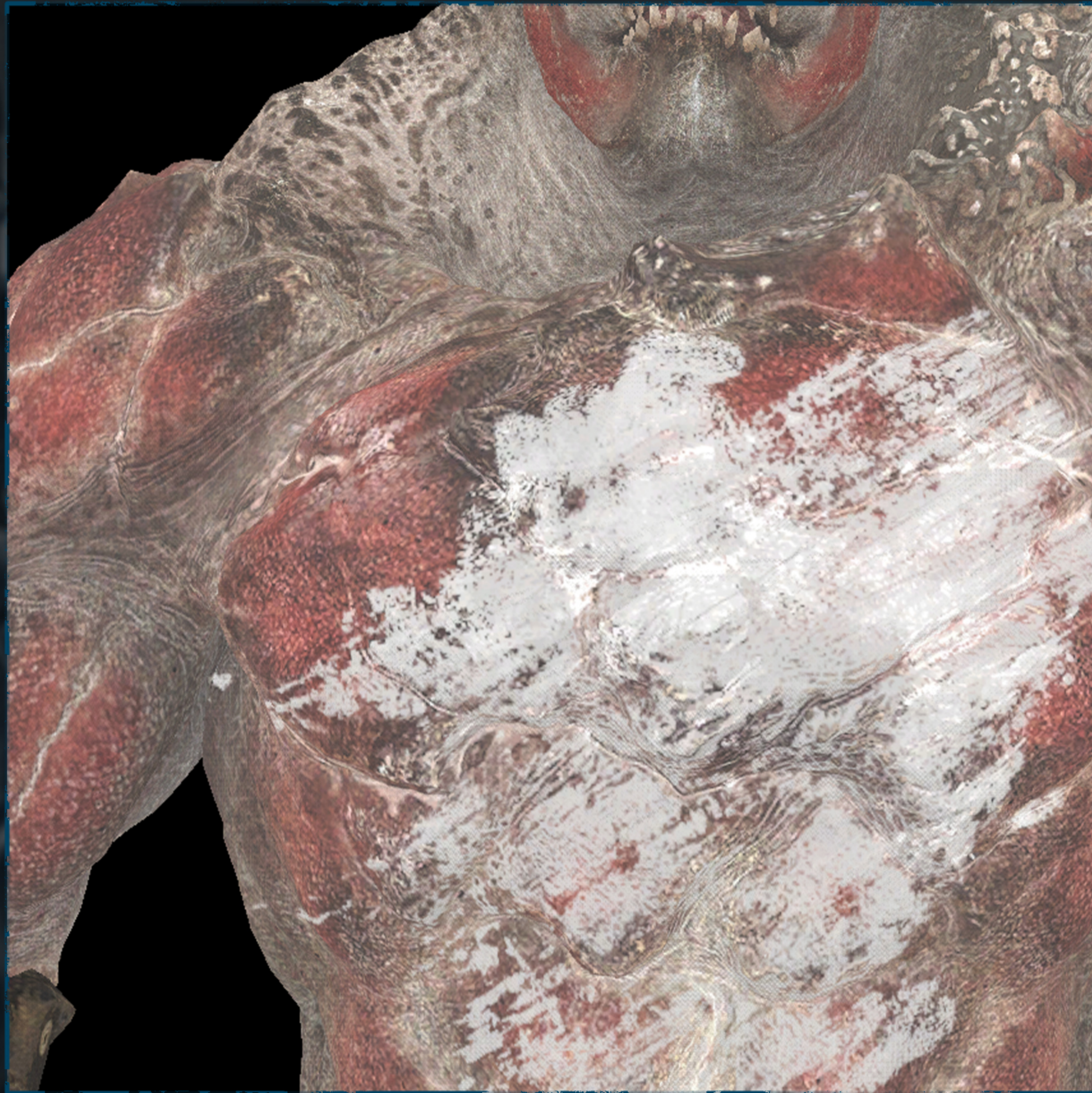
**I** The front of the Swarm loin cloth is adorned with metal, woven into the leather, with red plates running down the center.







**A** **SWARM IFF LIGHT**  
RGB: 249/146/25, CMYK: 0/51/99/0



**B** **CARAPACE**  
RGB: 168/98/94, CMYK: 29/68/57/10

